

# KIDS FOR YAH

VOLUME 7, ISSUE 7

July 2013

## Yahshua's Childhood



Have you ever wondered what Yahshua's childhood was like? While Yahshua was Yahweh's own Son, He still had to be born as a full-fledged human being. This means that He was born as a tiny baby, and had to go through all the same childhood phases that we all do. He had to learn to walk as a toddler, and probably had to do chores for His parents just like you do! He was expected to learn a trade, as He was Joseph's firstborn adopted son, and so He

learned to be carpenter. More than likely, Yahshua probably had fun playing with the other children, too! Archaeologists have discovered toys, such as balls, from ancient Israel. He may have even enjoyed fishing with Joseph, as fishing was very common in those days.

We know that Yahshua knew much about Yahweh even at such a young age, because when He was 12 years old, His parents found him speaking in the Temple to the religious leaders of His day, and they all were amazed at His knowledge and understanding! The Bible also tells us that Yahshua was an obedient Son to Mary (more accurately, Miriam) and Joseph.



It is very good to think of Yahshua's early life, because He truly was one of us! The Bible states that He was tempted in all areas—just like we are! Becoming one of us was a good thing too, because that means that Yahshua completely understands the struggles we go through in our lives. Let us continue to follow the perfect example He set for us.

### Inside this issue:

Yahshua's Childhood	1
Do you know?	2
Maze	3
Word Search	4

*"Whoever serves Me must follow Me; and where I am, My servant also will be. My Father will honor the one who serves Me."*

John 12:26 NIV

## Do you know?

1. Yahshua's mother was called:

- A. Mary (Miriam).
- B. Martha.
- C. Megan.
- D. Mildred.

2. Which is correct? Yahshua became a :

- A. Lawyer.
- B. Doctor.
- C. Carpenter.
- D. Tax collector.

3. Which is true?

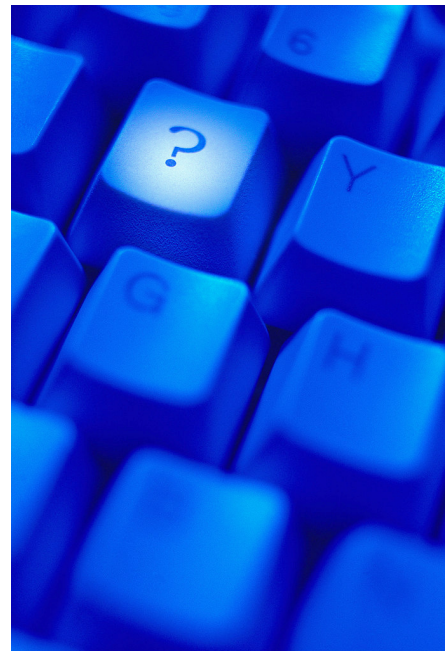
- A. Yahshua obeyed His parents.
- B. Yahshua ignored His parents.
- C. Yahshua knew much about Yahweh.
- D. Both A. and C. are true.

4. Which two are false?

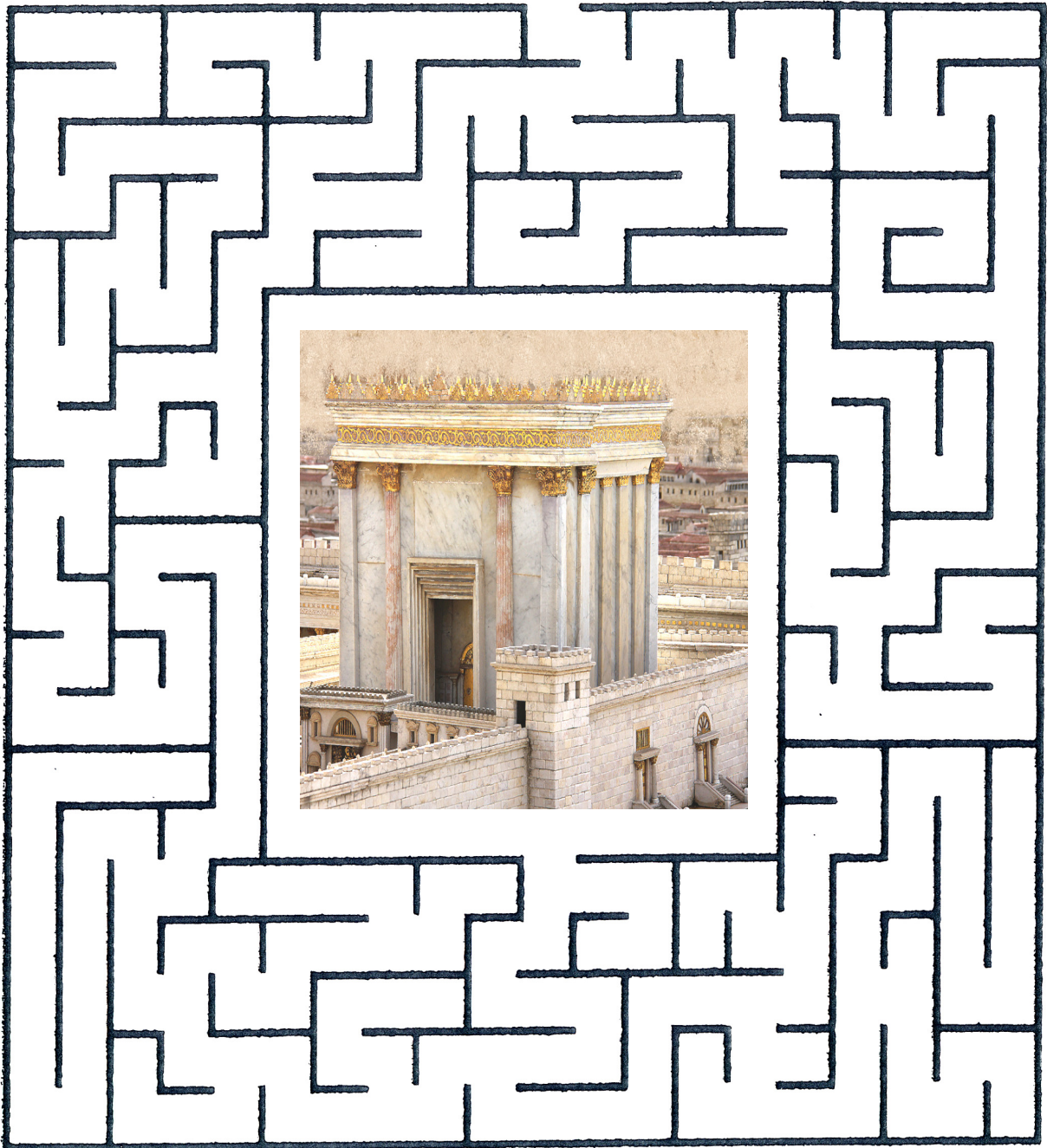
- A. The religious leaders were amazed at Yahshua's teachings.
- B. Yahshua had to go through all the phases of childhood.
- C. Yahshua ran away from home.
- D. Yahshua got all straight A's in school.

5. Yahshua was:

- A. Tempted in the same ways we are.
- B. One of us, understood our struggles.
- C. Very knowledgeable and obedient even at a young age.
- D. All are true.



Help Mary and Joseph  
find the Temple!



Yahweh's Assembly in Yahshua  
2963 County Road 233  
Kingdom City, Missouri 65262

Main Line: 1-573-642-4100  
Toll Free: 1-877-642-4101  
Fax Line: 1-573-642-4104  
Website: [www.KidsForYah.org](http://www.KidsForYah.org)



## Yahshua's Childhood

G	F	N	C	C	D	G	T	S	R	N	P	Q	C	N
G	N	I	D	N	A	T	S	R	E	D	N	U	H	B
E	N	I	S	O	M	I	U	G	T	V	Y	P	O	O
C	P	N	G	H	O	P	D	H	N	X	I	S	R	G
M	O	B	E	D	I	E	N	T	E	G	X	W	E	B
M	Q	P	P	A	L	N	V	Z	P	Q	J	P	S	I
T	V	Z	E	W	O	S	G	V	R	K	T	X	G	I
O	U	Z	O	I	J	F	F	H	A	R	X	Q	V	B
A	Q	N	G	V	X	V	F	J	C	H	Y	H	F	O
P	K	Z	H	I	V	X	Y	H	K	G	Z	F	S	M

Find the following words in the Word Search above:

**Fishing**   **Obedient**   **Carpenter**   **Knowledge**   **Chores**   **Understanding**